

Technical Specifications & Individual Component Details

Technical Specifications

The Project Sparkle CIP system consists of the following components. Each component can be split into two distinctive groups, ***Main plant items***, where components are individual to there design and operation, and ***Secondary plant items***, where components are duplicated across the complete installation.

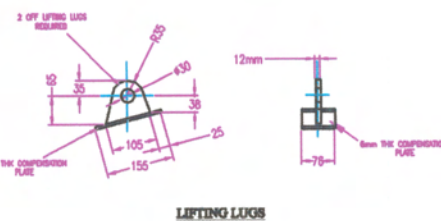
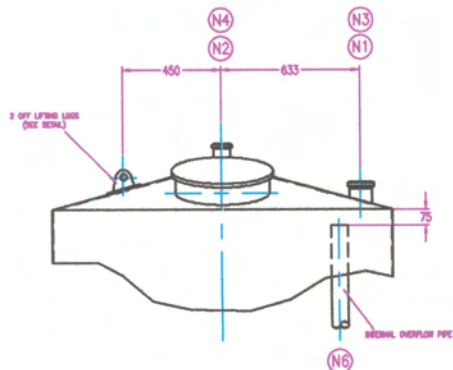
Main plant items

- 1) Water Buffer Tank (A1TA03)
- 2) Rinse Recovery Tank (A1TA02)
- 3) Detergent Make-up & Recovery Tank (A1TA01)
- 4) Rinse Tank Circulation Pump
- 5) Detergent Tank Circulation Pump
- 6) Detergent Dosing Pump
- 7) PAA Dosing Pump
- 8) Rinse Tank Plate Heat Exchanger
- 9) Detergent Tank Plate Heat Exchanger
- 10) Channel 1 Discharge Pump
- 11) Cip Scavenge Pump (Mounted near Filler)

A brief description and specification for each component is enclosed.

1) *Water Buffer Tank (A1TA03)*

Capacity	4750 Litres nominal (Full capacity 4920 Litres)
Construction	T316 grade stainless steel contact parts T304 grade stainless steel non contact parts
Finish	Internally – descaled cold rolled to BS: 1449 No 2B Externally – polished to BS: 1449 No 3B
Design	BS: 2654 Vertical, cylindrical shell, conical top & bottom Single skin, no insulation shell
Fixtures	Top entry access manway Vent stack Top entry water feed nozzle Bottom outlet nozzle Bottom entry temperature probe Bottom entry level probe Internal overflow tube Side shell mounted sample point nozzle

[illegible]

KEMTECH
INTERNATIONAL LTD

Tel: +44 (0) 1832 275252 Fax: +44 (0) 1832 275114

Client:	Solway Foods
---------	--------------

Site	Corby
------	-------

Project	Sparkle
---------	---------

Day Title	5000 Ltr Water Tank
-----------	---------------------

Doc No	SL/AO/002	Rev No	B
--------	-----------	--------	---

Seser: TS • M/Space

Drawn	ACS	On/In	MS	App'n	
-------	-----	-------	----	-------	--

2) *Rinse Recovery Tank (A1TA02)*

Capacity 3350 Litres nominal (Full capacity 3720 Litres)

Construction T316 grade stainless steel contact parts
T304 grade stainless steel non contact parts

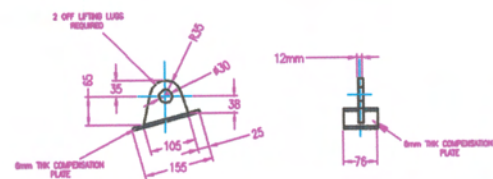
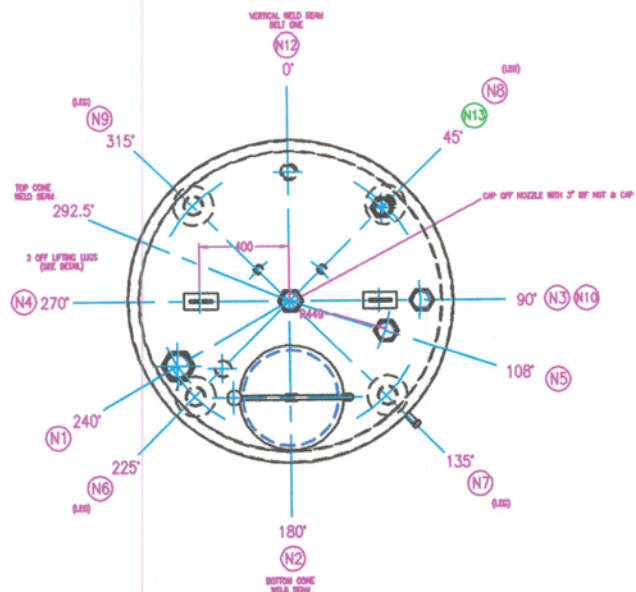
Finish Internally – descaled cold rolled to BS: 1449 No 2B
Externally – polished to BS: 1449 No 3B

Design BS: 2654

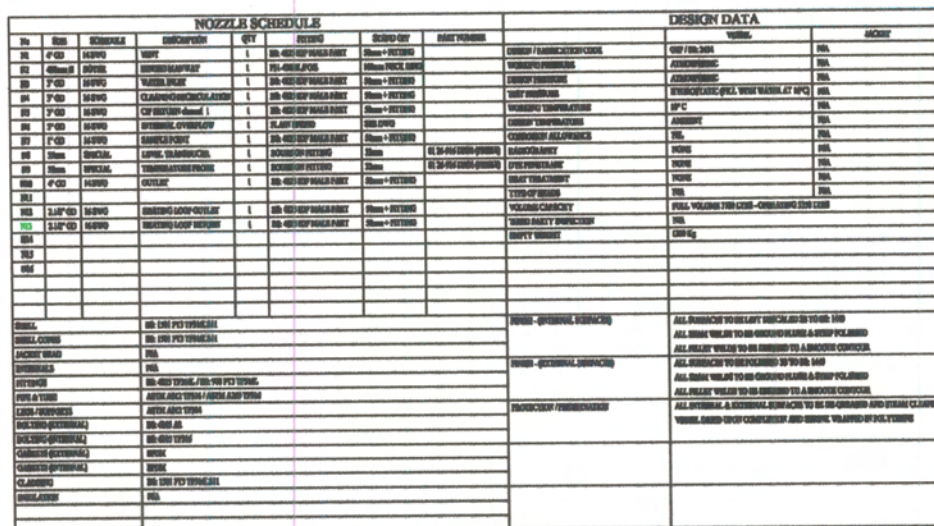
Vertical, cylindrical shell, conical top & bottom

Insulated and overlaid on the shell straight with fully welded sheet

Fixtures Top entry access manway
Vent stack
Top entry water feed nozzle
Top entry sprayball nozzle
Top entry channel 1 return nozzle
Top entry heating recirculation nozzle
Bottom outlet nozzle
Bottom entry temperature probe
Bottom entry level probe
Bottom outlet heating recirculation nozzle
Internal overflow tube
Side shell mounted sample point nozzle



LIFTING LUGS

[illegible]

KEMTECH
INTERNATIONAL LTD

Tel: +44 (0) 1832 275252 Fax: +44 (0) 1832 275114

Client:	Solway Foods
---------	--------------

Site	Corby
------	-------

Project:	Sparkle
----------	---------

Day Title	3000 Ltr Rinse Water Tank
-----------	---------------------------

Doc No	SL/AO/003
--------	-----------

Model	SL/RO/GO
Series	TS • M/Space

11

	On/Off
--	--------

--	--

April 01	
----------	--

3) *Detergent Make-up & Recovery Tank (A1TA01)*

Capacity 3350 Litres nominal (Full capacity 3720 Litres)

Construction T316 grade stainless steel contact parts
T304 grade stainless steel non contact parts

Finish Internally – descaled cold rolled to BS: 1449 No 2B
Externally – polished to BS: 1449 No 3B

Design BS: 2654

Vertical, cylindrical shell, conical top & bottom

Insulated and overlaid on the shell straight with fully welded sheet

Fixtures Top entry access manway
Vent stack
Top entry water feed nozzle
Top entry sprayball nozzle
Top entry channel 1 return nozzle
Top entry heating recirculation nozzle
Top entry bulk detergent inlet nozzle
Bottom outlet nozzle
Bottom entry temperature probe
Bottom entry level probe
Bottom outlet heating recirculation nozzle
Internal overflow tube
Side shell mounted sample point nozzle

4) *Rinse Tank Circulation Pump*

Capacity	Approximately 20000ltrs/hr Flowrate at 2.1 bar (g)
Construction	T316 grade stainless steel contact parts T304 grade stainless steel non contact parts
Finish	Internally – polished Externally - painted 2 pack grey epoxy paint (Motor shroud fitted)
Design	CSF CS40-145-2-4 centrifugal pump Horizontal mounting with inlet and outlet ports 2" SMS male ends Fixed speed with 3 Kw 2950rpm motor running at 50hz
Fixtures	Mounted on stainless steel adjustable feet

5) *Detergent Make-up Tank Circulation Pump*

Capacity	Approximately 20000ltrs/hr Flowrate at 2.1 bar (g)
Construction	T316 grade stainless steel contact parts T304 grade stainless steel non contact parts
Finish	Internally – polished Externally - painted 2 pack grey epoxy paint (Motor shroud fitted)
Design	CSF CS40-145-2-4 centrifugal pump Horizontal mounting with inlet and outlet ports 2" SMS male ends Fixed speed with 3 Kw 2950rpm motor running at 50hz
Fixtures	Mounted on stainless steel adjustable feet

6) *Detergent Dosing Pump*

Capacity Approximately 0.5M³/hr Flowrate at 1.5 bar (g)

Construction Polyethylene contact parts
 EPDM Diaphragm & ball

Design Hilge T50 PEE air diaphragm pump

Horizontal mounting with inlet and outlet ports ½" Bsp female

Air driven via 1/8" Bsp

Fixtures Mounted on rubber feet fixed to a stainless steel frame